

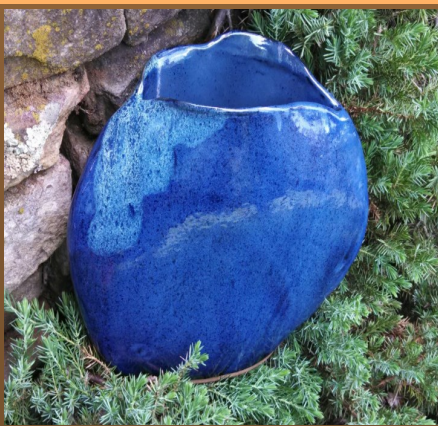
Valley Women Who Create

Favorite Quote: "Whatever thy hand finds to do, do it with thy might." -Ecclesiastes 9:10

I first met Brenda Fairweather at the Blue Ridge Christian School Craft Show and immediately felt drawn to her art work. She is a very kind, spiritual and creative person. One thing unusual about Brenda is that she successfully works within two mediums: art and fiber (basketweaving). She focuses her work on creating functional items that can be used within the home where she has a pottery studio and a separate room for her basketweaving. Her pottery work is dishwasher and microwave safe. Brenda's baskets are a product of her love of nature and working with her hands. She uses natural materials found locally in the Shenandoah Valley. Her favorite item to work with is grapevine. The baskets are influenced by the Egg Basket design of Appalachia. Her inspiration comes from her faith in God. She loves creating with her hands and finds balance in her life through the process of working with clay and weaving baskets. She also enjoys promoting arts for children where last summer she hosted a "Clay Play Day" program. For each Clay Play Day, Brenda and her husband invite community families to their home for clay projects, and sometimes, lunch or dinner. Brenda's husband loves to cook and they enjoy growing their own food. Clay Play Days are offered free of charge as a way to give back to the community, though donations are welcome to help cover the costs. Brenda is a member of Oasis Art Gallery in downtown Harrisonburg where you can also find her beautiful artwork. For more information, contact Brenda at (540) 433-3258 at D'vine baskets by Brenda and Hot Flash Pottery bbfairweat@aol.com.



Brenda Fairweather



"in and out, up and down, over and over, she wove her strands of her life together. patching hole after hole. eventually she saw it was much more than threads that gave her strength, it was in the very act of weaving itself, that she became strong..."
Terri St. Cloud